



# Precision in Design: APS Precast Portfolio

Explore our architectural precast projects that shape Seattle's skyline. Precision-engineered, durable, and designed to stand the test of time.

**GET IN TOUCH**

**+1604-888-1968**

**[www.apsprecast.com](http://www.apsprecast.com)**

# About Us.



**APS Precast**

+1604 888 1968

@apsprecast.com

9844 199 A St, Langley Twp, BC V1M 2X7

## Introduction

Welcome to APS Precast, a trusted manufacturer based in Langley, British Columbia, serving clients across Canada and the U.S. With decades of experience in the precast concrete industry, we specialize in delivering architectural and structural precast solutions that combine innovation, precision, and design excellence. Our dedicated team engineers every project with care, ensuring durability, visual appeal, and performance that meet the highest standards of modern construction.

## Our Philosophy

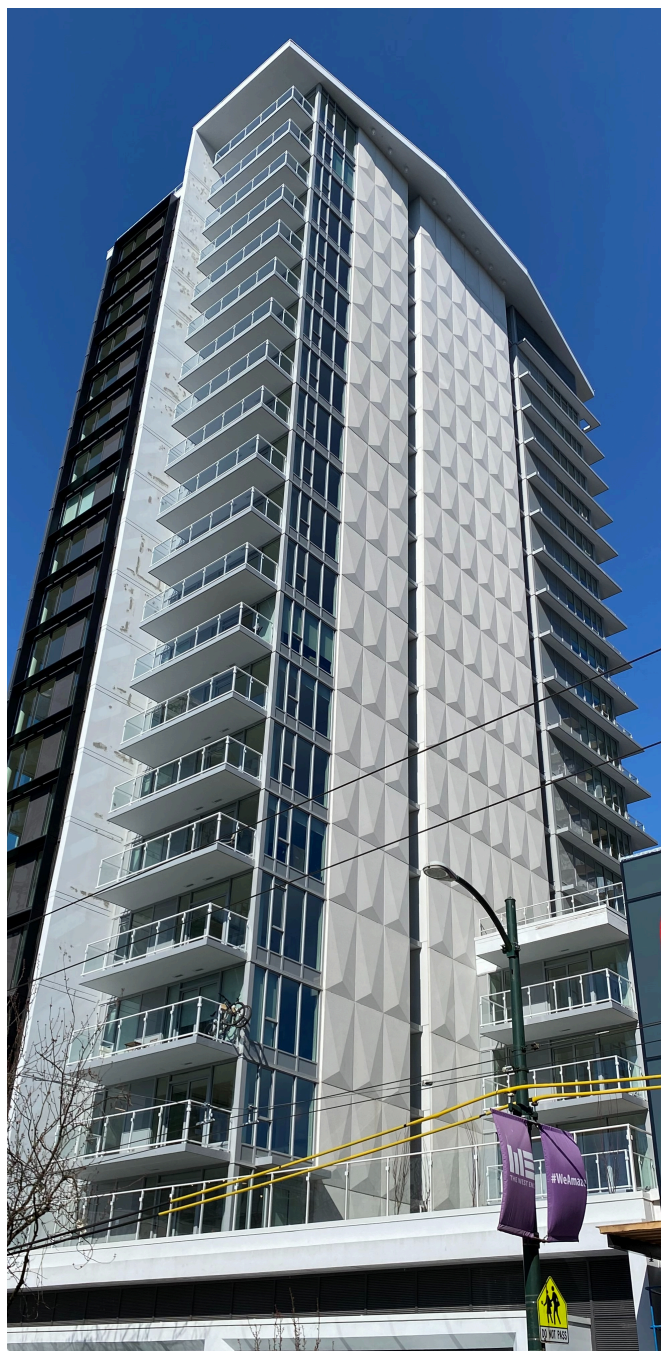
Guided by a commitment to excellence, APS Precast views every project as a chance to shape lasting value. Our professional team blends technical skill with architectural creativity, producing sustainable solutions that combine strength, function, and visual appeal.



## Future Horizons

APS Precast is expanding its presence across Seattle and the U.S., setting new benchmarks in precast innovation. Committed to transparency, performance, and sustainability, we continue to redefine standards and help build durable, timeless structures.

[www.apsprecast.com](http://www.apsprecast.com)



## **1188 Bidwell**

APS Precast supplied custom architectural precast panels for the 1188 Bidwell high-rise in Vancouver's West End. Designed to achieve a sleek, modern aesthetic, the façade panels add both texture and depth to the building's exterior.

Each panel was precision-engineered and manufactured at our CSA-certified facility, ensuring consistent quality, strength, and color throughout the project. The result is a durable, visually striking structure that enhances the surrounding urban landscape.

APS Precast coordinated closely with the project team to achieve on-time delivery and efficient installation, reflecting our commitment to reliability and performance.

[www.apsprecast.com](http://www.apsprecast.com)



## VGH2

APS Precast supplied architectural precast panels for the Vancouver General Hospital (VGH2) tower. This large-scale institutional project required precise engineering and durable materials to meet the hospital's demanding safety and design standards.

Each panel was custom-designed and manufactured to deliver strength, fire resistance, and a refined architectural finish. APS Precast ensured consistent quality, accurate installation, and on-time delivery — reflecting our commitment to excellence in complex infrastructure projects.

[www.apsprecast.com](http://www.apsprecast.com)

## VGH4

APS Precast supplied architectural precast panels for the VGH4 tower, part of the Vancouver General Hospital redevelopment. This project required durable, high-performance materials designed to meet strict healthcare construction standards while maintaining a modern and refined appearance.

Each panel was precision-cast to ensure dimensional accuracy, consistent texture, and long-term weather resistance. The façade features a clean, contemporary finish that enhances the hospital's visual appeal and structural resilience.





# 400 Fairview Seattle

APS Precast contributed to the construction of 400 Fairview Seattle, a modern mixed-use tower designed for both commercial and residential use. This project highlights our ability to deliver architectural precast elements that combine strength, precision, and refined design.

Our team supplied and installed custom precast façade panels engineered for visual balance and uniformity. Each component was crafted to meet the project's contemporary architectural vision while maintaining durability and accuracy throughout installation.



APS Precast's contribution to the 400 Fairview project demonstrates our dedication to excellence in every stage — from design collaboration to final installation. Our team worked closely with architects and contractors to ensure precision alignment, consistent color matching, and high-quality finishes across all façade elements. This project stands as a showcase of APS Precast's ability to deliver durable, visually refined solutions that enhance Seattle's modern skyline while meeting demanding construction schedules.

[www.apsprecast.com](http://www.apsprecast.com)



# UBC-Orchard Residences

APS Precast supplied and installed architectural precast panels for the UBC Orchard Residences in Vancouver, BC. This project showcases a contemporary approach to university housing—combining strength, functionality, and design precision to create a visually striking façade that complements the modern campus environment.

Each panel was meticulously engineered to achieve consistent surface quality and long-term durability. The clean vertical lines and smooth finish highlight APS Precast's dedication to craftsmanship and innovation, delivering an elegant structure that enhances both performance and architectural appeal.



[www.apsprecast.com](http://www.apsprecast.com)



# Alaska State Legislature

APS Precast supplied architectural precast panels for the Alaska State Legislature Building renovation, ensuring both structural strength and lasting visual appeal. This project highlights our ability to preserve the building's historic character while improving performance and durability in Alaska's challenging northern climate.

Each panel was engineered for precision fit and designed to replicate the original stone façade. Through close collaboration with project teams, APS Precast achieved consistent quality, efficient installation, and an authentic finish that respects the building's historic integrity.

APS Precast's role in this renovation demonstrates our commitment to preserving architectural heritage while meeting modern construction standards. By combining advanced precast technology with precise craftsmanship, we delivered durable panels that seamlessly blend with the building's historic design, ensuring lasting beauty and performance for decades to come.

[www.apsprecast.com](http://www.apsprecast.com)





# CurvedMU

---

APS Precast engineered and manufactured custom curved architectural precast panels for the Curved MU structure, showcasing advanced formwork design and precise craftsmanship. This project highlights APS Precast's expertise in creating complex, non-linear shapes that merge innovation, strength, and visual impact.

Each panel was custom-designed using advanced moulding and casting methods to achieve seamless curvature and consistent surface finish. Through technical precision and close coordination, APS Precast ensured efficient installation and lasting performance for this uniquely sculpted architectural element.



This project represents APS Precast's dedication to pushing the boundaries of concrete design. By combining innovative engineering with skilled craftsmanship, we transform complex architectural visions into durable, high-performance structures that redefine the possibilities of precast concrete.

[www.apsprecast.com](http://www.apsprecast.com)



# U.S. Courthouse Seattle

---

APS Precast supplied and installed architectural precast panels for the U.S. Courthouse in Seattle, a landmark federal project requiring exceptional precision and structural performance. Designed with both durability and visual sophistication in mind, this building highlights APS Precast's ability to meet the demanding standards of large-scale government infrastructure.

Each precast panel was engineered for strength, fire resistance, and aesthetic consistency, ensuring a clean and refined exterior that complements the courthouse's modern architectural form. Our team applied advanced casting techniques and rigorous quality control to achieve a flawless surface finish and uniform fit across the façade.



# 1007 Stewart Seattle

---

APS Precast provided precision-engineered architectural precast panels for the 1007 Stewart Seattle high-rise, designed to meet the demands of modern urban development. This project demonstrates our expertise in delivering high-quality façade systems that combine strength, accuracy, and aesthetic appeal.

Each panel was custom-designed to match the building's contemporary style, ensuring a seamless and durable exterior. APS Precast coordinated closely with the project team to guarantee efficient production, timely delivery, and precise installation, contributing to the lasting impact of Seattle's skyline.

[www.apsprecast.com](http://www.apsprecast.com)



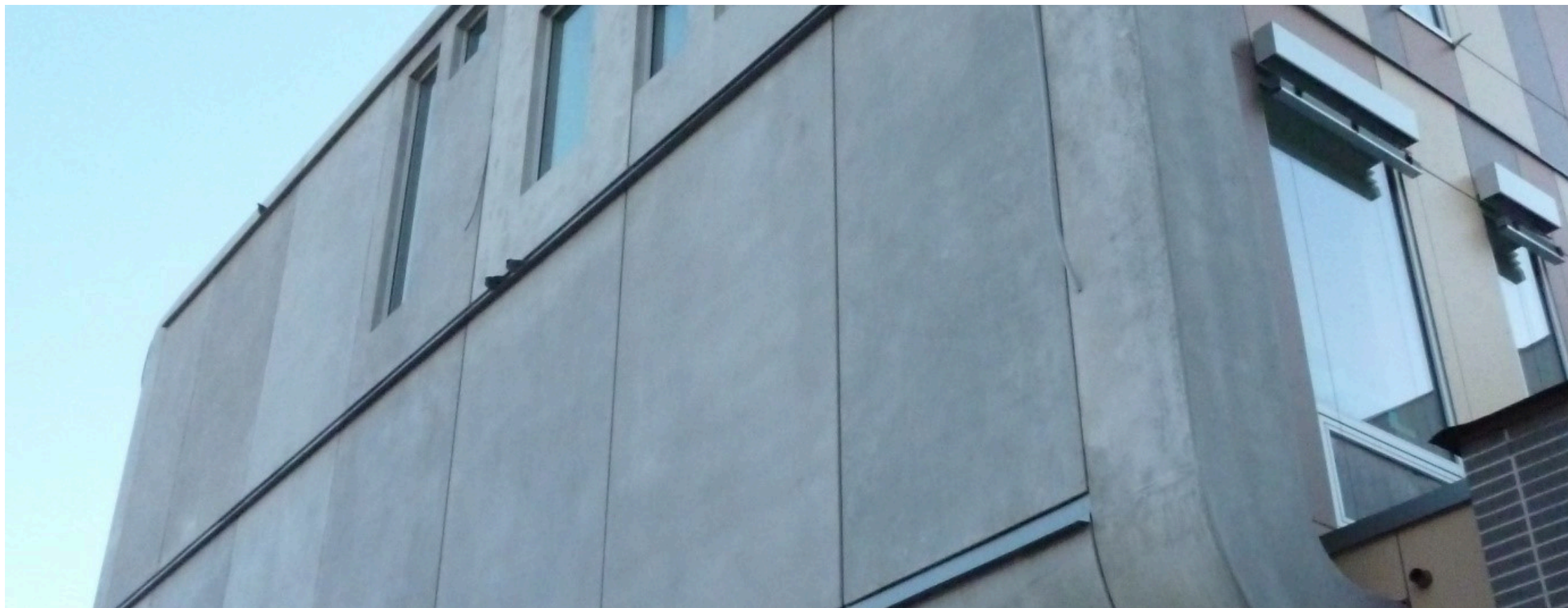


# StMarys

---

This project showcases APS Precast's continued leadership in innovative concrete design. By merging modern architecture with precision manufacturing, we delivered curved precast elements that define both style and structure. The St. Mary's building stands as a lasting example of how form and function can come together through advanced precast engineering.

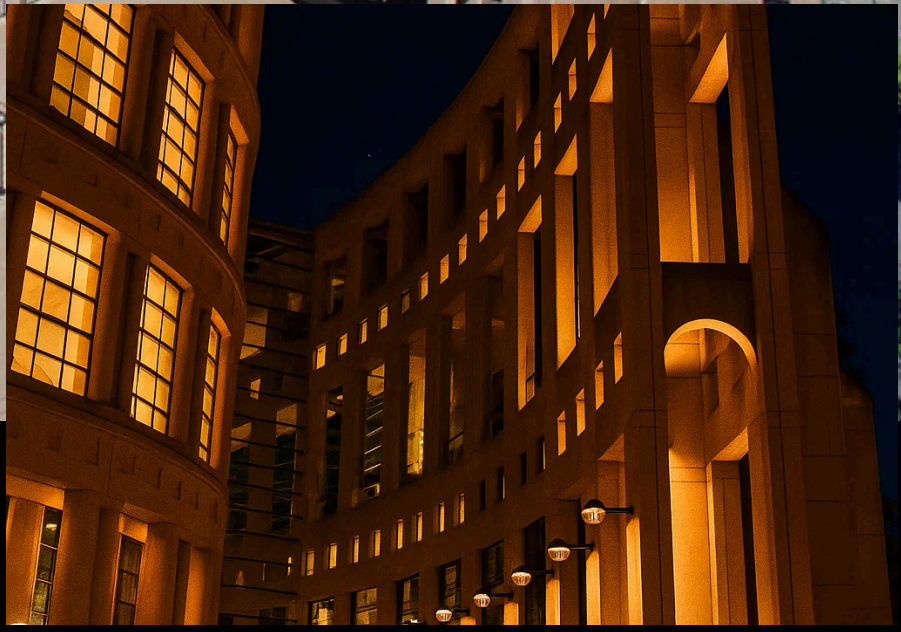
Each panel was custom-cast using advanced formwork and moulding techniques to achieve smooth curvature and a refined finish. Our team ensured every element met structural requirements while maintaining the aesthetic intent of the design. The result is a durable, contemporary façade that enhances the building's architectural identity.



Through careful coordination and technical excellence, APS Precast delivered consistent quality, efficient installation, and on-time performance. The St. Mary's project highlights our ability to bring ambitious architectural visions to life with precision, craftsmanship, and lasting durability.

Through careful coordination and technical excellence, APS Precast delivered consistent quality, efficient installation, and on-time performance. The St. Mary's project highlights our ability to bring ambitious architectural visions to life with precision, craftsmanship, and lasting durability.





# Vancouver Public Library

APS Precast supplied architectural precast panels for the Vancouver Public Library, one of the city's most iconic architectural landmarks. Designed to reflect timeless elegance and civic pride, the structure combines durability with a distinct visual rhythm that captures the essence of modern urban design.

Each precast element was engineered for long-term performance and precision alignment, creating the library's signature curved façade. Through advanced manufacturing and attention to detail, APS Precast helped bring to life a public space that balances form, function, and enduring architectural excellence.

[www.apsprecast.com](http://www.apsprecast.com)



# Hyatt Regency Seattle

APS Precast supplied architectural precast panels for the 8th + Howell Hotel in Seattle, a striking addition to the city's skyline. Designed to meet the challenges of modern urban architecture, this project showcases APS Precast's ability to deliver precision-engineered façade systems that unite strength, functionality, and refined aesthetics. The panels were crafted to complement the tower's sleek geometry, creating a cohesive visual flow that emphasizes verticality and modern sophistication.

Each precast element was custom-designed to achieve both structural integrity and architectural harmony. Through meticulous detailing and smooth surface finishes, APS Precast ensured the façade's continuity and elegance from ground level to rooftop. Close collaboration with architects and engineers enabled seamless integration of form and function, resulting in a building that stands as a model of contemporary design and lasting craftsmanship.



# OUR EXPERT TEAM

At APS Precast, our success is built on the experience and dedication of our team. With decades of combined expertise in architectural precast design, production, and project management, our professionals ensure that every element we create meets the highest standards of precision, durability, and design excellence.

Together, our leadership and skilled staff bring passion and technical mastery to each project — ensuring APS Precast continues to be recognized as a trusted partner in shaping modern architecture across the Pacific Northwest.



**Roy Mattarollo**  
Plant Manager

Roy plays a key role in overseeing production processes and ensuring every project meets the company's high standards of quality and precision. His leadership helps maintain smooth operations and consistency across all stages of manufacturing.



**Derrick Villars**  
Production Manager

Derrick ensures each project runs efficiently from start to finish. He focuses on coordination, quality, and teamwork, supporting the company's commitment to excellence in every product delivered.



**Racy Sidhu**  
Managing Partner

Racy provides strategic guidance and direction for the company's ongoing growth and innovation. His leadership fosters collaboration, creativity, and a shared commitment to delivering outstanding results.



# Get in Touch



+1604 888 1968



[info@apsprecast.com](mailto:info@apsprecast.com)



[www.apsprecast.com](http://www.apsprecast.com)